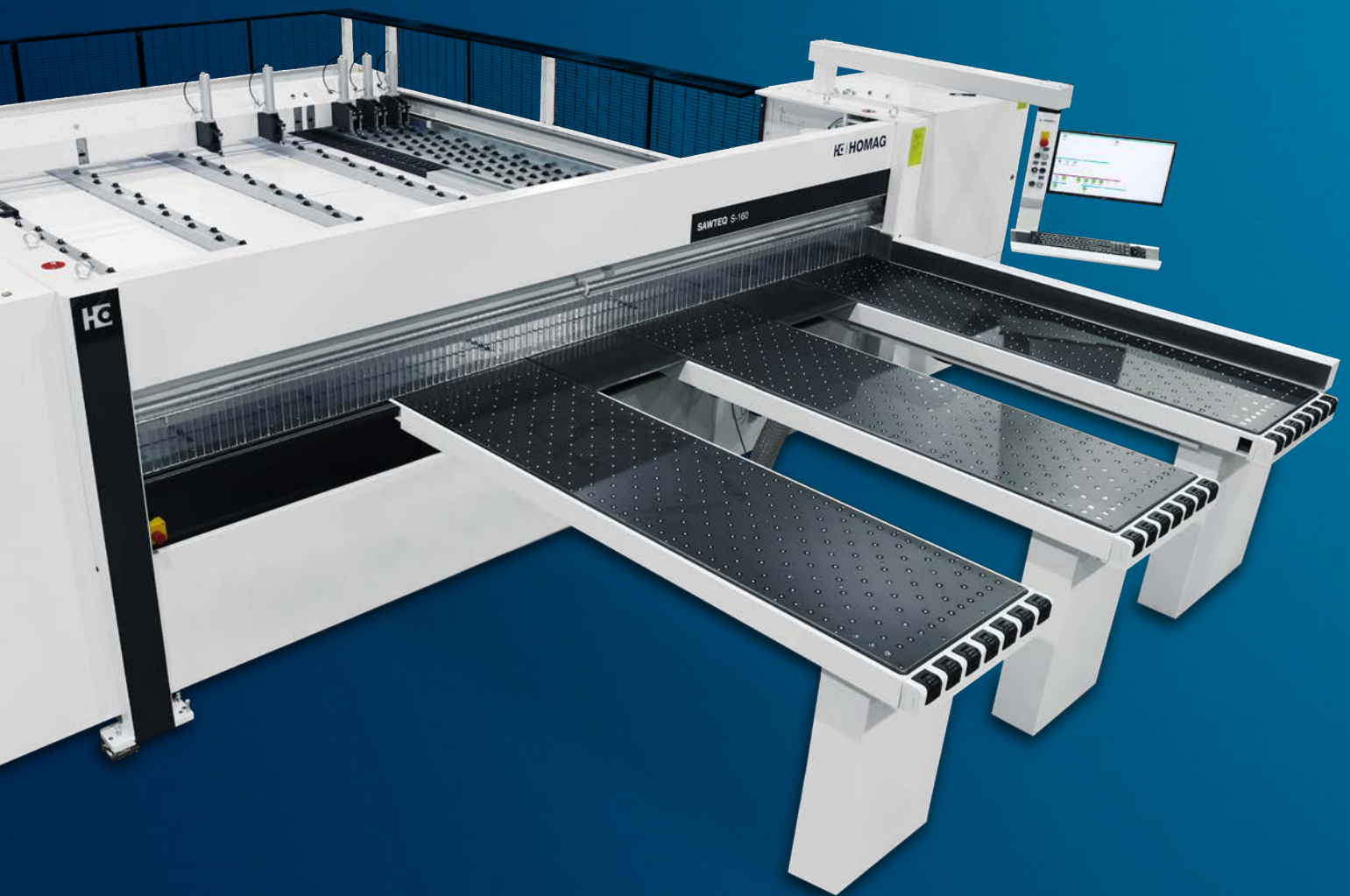


SAWTEQ S-160

Performance tailored to your needs.
Our panel dividing saw







SAWTEQ S-160 – efficient saw at low price

The SAWTEQ S-160 offers you exactly what you need for horizontal panel cutting: Power, precision and, above all, flexibility. This starts with the software: The SAWTEQ S-160 is equipped with the latest CADmatic version including quickTip and CADplan cutting plan optimization - making your cutting more sustainable and easier than ever before.

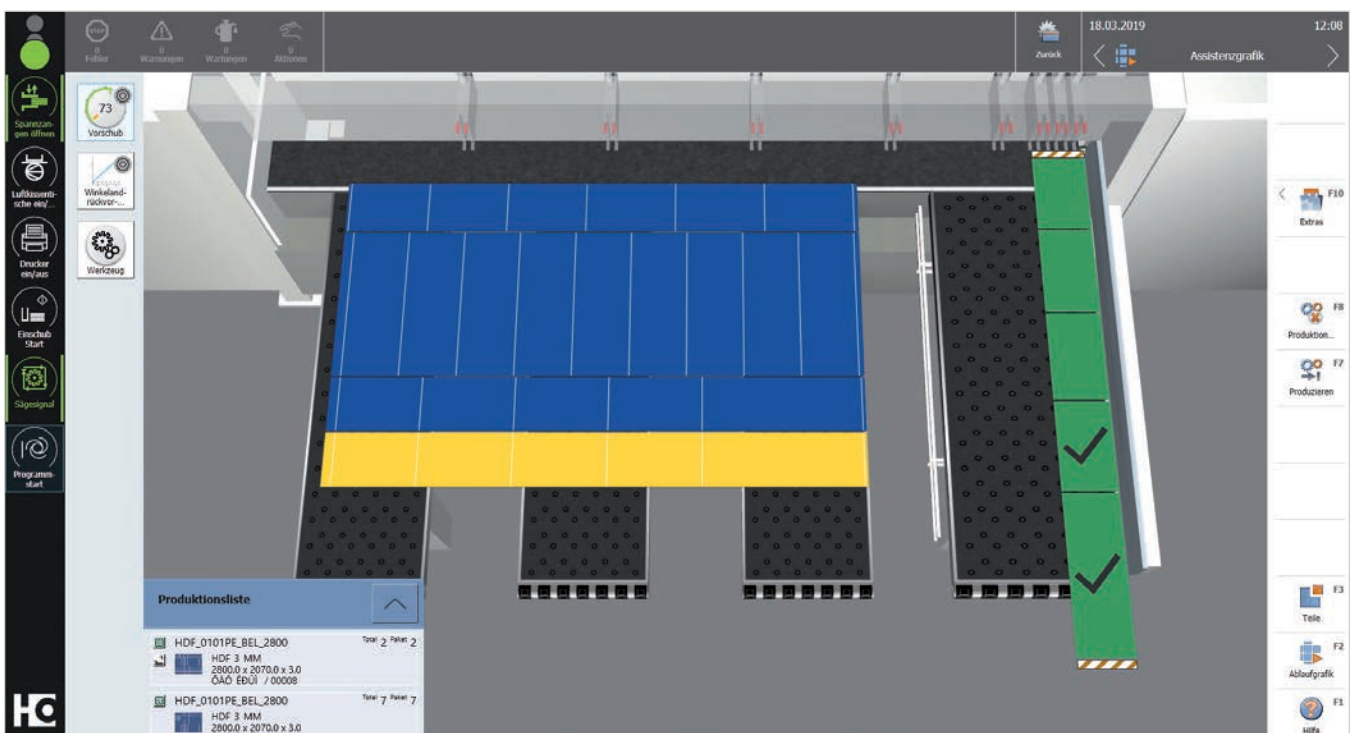
YOUR SOLUTION

CONTENTS

- 04 Software
- 08 SAWTEQ S-160
- 10 Standard features
- 13 Technical data
- 14 Services

CADmatic 5 – intuitive to operate and open for digital networking

CADmatic 5 is the state-of-the-art, high-performance saw control system from HOMAG. A wide range of functions and easy to handle. This is ensured thanks to the intuitive operating concept and clear administrative functions. What's more, CADmatic 5 is open for communication with other machines and software solutions.



CADmatic 5 – the change in perspective

The latest generation of the HOMAG saw control system has a 3D assistance graphic that clearly shows the machine operator all the cutting steps in order. It can be operated intuitively, which shortens the training time and reduces errors to a minimum.

NEW: quickTip – the assistant for optimal use of the machine functions

quickTip is a new assistance function integrated into the HOMAG saw control system for maximum quality, operating comfort and performance. It supports the machine operator by providing recommendations for optimal use of functions directly at the saw. The advantage is that the functions and parameters can be activated centrally at one single point in CADmatic – this simplifies work, ensures smooth processes and a uniformly high output.

Highlights:

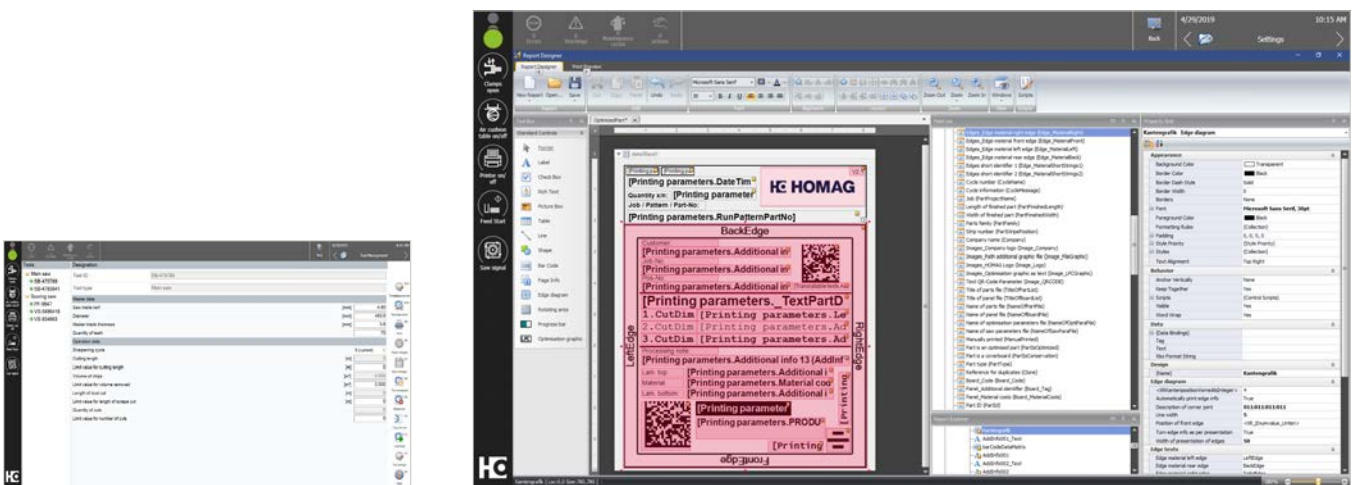
- Simple, intuitive and ergonomic machine operation thanks to the 3D assistance graphic
- This results in efficient processes and a steady output
- 21,5" swiveling full-HD display in widescreen format
- All HOMAG saws with CADmatic 5 are automatically tapio-ready

Find out more in the „CADmatic“ brochure.

quickTip supports the machine operator easily, so they can use the full potential of the machine

CADmatic 5 – offers you an enormous variety of functions and is easy to use

From cutting to length all the way to managing tools, the standard features of the CADmatic control software alone offer you an enormous variety of functions - here you will find a few of the most important features for your daily business.



Tool management

How much material have you already cut with this saw blade? Does its condition still meet your quality requirements? The tool management feature knows the exact answers to such questions and indicates when it is time to change the tool. To make use of this feature, simply enter estimated values for the specific material mix.

Do you use a number of different tools? If so, you can save the respective parameters under an appropriate name. The software then assigns the data for usage and volume to each tool separately. If a tool has to be replaced due to wear, you simply reset the corresponding counter to zero.

Backup manager and storage medium for convenient data backup

Back up all CADmatic settings directly after installation or at any other time - simply and conveniently with a 1:1 backup on a USB drive. This means you are always protected against data loss in the event of a power failure and can reset the processing speed of your computer to the factory settings at any time.

CADlink

The SAWTEQ S-160 is equipped with the CADlink conversion program as standard. This means that external optimization programs (output format PTX or MDB cutting file) can also be easily connected to the saw.

Labeling

No matter whether single parts or entire stacks, using the "labeling" option, you can label the results of your work with all the relevant information in time with the cuts and pass data on to downstream machines.

How does it work? The layout editor allows you to define the label design and enter the required data in CADmatic. You are able to include text information as well as graphics and freely selectable bar codes. The system will then generate the labels in perfect time with the processing cycles. Depending on the system, the labels are then attached automatically or by hand. An optional feature that sets industry benchmarks where scope for design and hardware quality is concerned, leaving nothing to be desired.

The screenshot displays the CADplan software interface on a computer monitor. The interface is divided into several sections:

- Top Bar:** Contains icons for 'Errors', 'Warnings', 'Manufacture cycle', and 'Advice'. On the right, it shows the date '4/29/2019', the time '8:49 AM', and the 'Optimization' mode.
- Parts list:** A table with columns: Description, Length, Width, Quantity, Material, and Grain. The name 'PNR9573498' is entered in the search field.
- Board list:** A table with columns: Board code, Length, Width, Quantity, Material, and Thickness. The name 'DSP19-RER' is entered in the search field.
- Parameter settings:** Shows 'Saw' set to 'Standard' and 'Optimisation' set to 'Standard'.
- Left Sidebar:** Contains icons for 'Clamp spot', 'Air cushion table on/off', 'Printer on/off', 'Feed Start', and 'Saw signal'.
- Right Sidebar:** Contains function key shortcuts (F1-F12) for actions like 'Import parts list', 'Import board list', 'optimize', 'Save board list as...', 'Save board list', 'Load board list', 'Save part list as...', 'Save parts list', 'Load parts list', and 'Main'.

Description	Length	Width	Quantity	Material	Grain
Box	500.0	500.0	10	DSP19-RER	none
Base	800.0	650.0	7	DSP19-RER	none
Box	365.0	250.0	2	DSP19-RER	none
Side	1010.0	380.5	2	DSP19-RER	none
	0.0	0.0	0		none

Board code	Length	Width	Quantity	Material	Thickness
DSP19-RER_2800_2070	2800.0	2070.0	16	DSP19-RER	19.0
X737534975	562.0	916.4	1	DSP19-RER	19.0
X063083242	975.6	1050.2	1	DSP19-RER	19.0
	0.0	0.0	0		0.0

CADplan – cutting pattern optimization at the saw

Our motto is “get more out of it.” That’s why HOMAG has taken its CADplan cutting pattern optimization feature directly to the saw. The benefit to you is that you simply enter all the parts lists and panel lists for the current order in CADmatic, or import the required lists in CSV file format.

CADplan then promptly generates optimized cutting patterns, minimizing material wastage and making your company more productive. The ideal solution for small- to medium-sized orders.



Apps and digital assistants.

Quick and easy support in your machine environment.

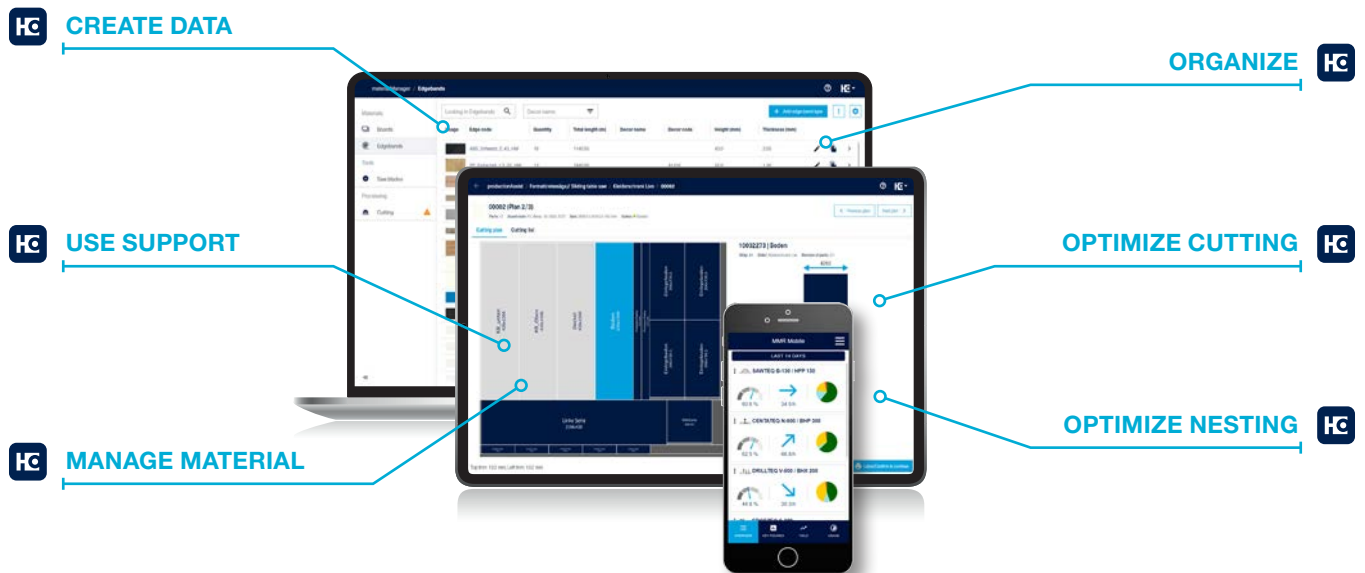
Some people still use pen and paper to create their cutting patterns. But they look at their smartphone if they want to know what the weather is like – instead of looking out of the window. We asked ourselves: why not combine the best of both? Our apps and digital solutions make your everyday work easier: machines, material, tools, cutting patterns, components – you always have everything in your pocket or on your desk.



More information at digital.homag.com

WE HAVE DEVELOPED POWERFUL AND SMART SOLUTIONS FOR YOU:

- ✓ Always low investment
- ✓ Always up to date (no updates necessary)
- ✓ Always easy to use (no complex software)
- ✓ Always helpful



SAWTEQ S-160

Compact in size, sturdily built and equipped with proven HOMAG technologies. In short: The SAWTEQ S-160 is a panel dividing saw that is perfect for the requirements of up-and-coming industrial companies. In addition, the machine has a comprehensive safety concept. Following German standards and a specific choice of components, we've made working with the SAWTEQ S-160 not only comfortable, but also safe to handle.





The Highlights

- Label with part graphic and labling program
- toolManager for a sharp blade
- Convenient data backup
- Conversion program CADlink



The SAWTEQ S-160 workstation – space-saving and efficient

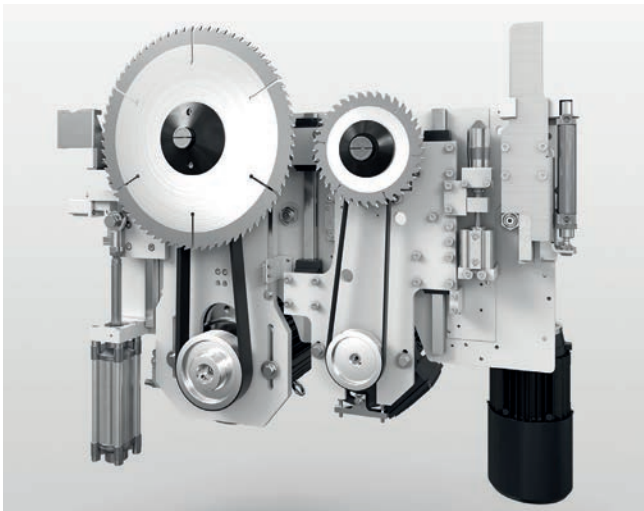
The workstation of the SAWTEQ S-160 leaves nothing to be desired in terms of ergonomics, safety and efficiency. This enables smooth work processes and easy parts handling.

- 1** Side pressure device - precise cutting, improved process quality
- 2** Air tables fully air cushioned – easy moving of board, single sheet and books, additional 2nd fan available as option
- 3** CADmatic 5.1 – intuitive operation, next step visualization
- 4** CADplan Optimization – less waste, manual off-cut loop
- 5** quickTip – operator effectiveness
- 6** Highest cutting quality
- 7** Waste bin



The equipment: We've thought of everything!

Low-maintenance, ergonomic, gentle on materials, powerful and process-optimized: The SAWTEQ S-160 owes these and many other features to impressive basic technical equipment.



Saw carriage with Power-Loc

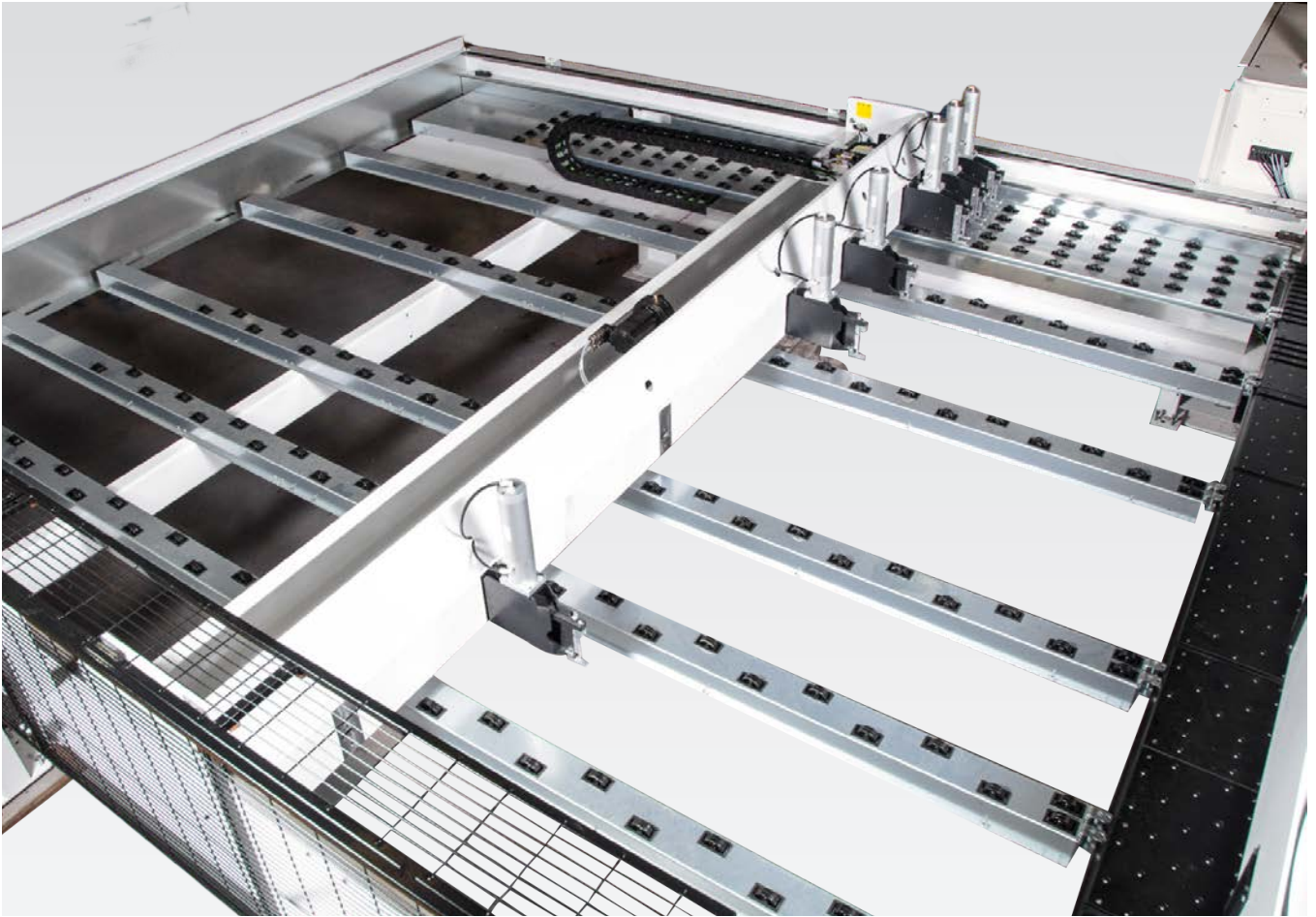
Maximum running smoothness, high precision and low energy consumption characterize the new saw carriage.

- Torsion-resistant, solid and resilient basic construction of the steel plate housing for maximum dynamics and precision
- Motorized adjustment of the scoring saw
- Infinitely variable feed speed - for precise cutting of demanding materials
- Permanently precise saw blade projection
- Low-noise and maintenance-free drive
- Light scanner cleaned with brush
- Power-Loc system: quick and easy saw blade change



Central side pressure device

- Integrated directly into the saw carriage. This reduces the cycle times by up to 25% in comparison with conventional systems
- The contact pressure is infinitely variable – ideal for thin panels, laminates or sensitive materials



Clamps: perfection down to the last detail

- The robust HOMAG clamps position the material carefully and precisely at the cutting line.
- The upper fingers of the clamps do not exert any leverage regardless of the package height; instead, they lower themselves horizontally and with the entire contact surface onto the material. This increases the penetration depth and ensures a firm hold
- Designed for continuous multi-shift operation

Rugged pressure beam for first-class cutting quality

- Large-area pressure zone directly at the cutting line reduces material vibrations to a minimum
- Toothed rack and pinion ensure the necessary parallel adjustment
- Linear guide on both sides for precise cuts, even in books

Program fence for precision and dimensional accuracy

- Resistant to torsion and bending
- Electronically controlled
- Precision guidance
- Electromagnetic measuring system
- Measuring system involves no wear and no maintenance

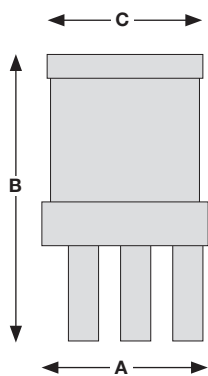
TECHNICAL DATA*	
Model	SAWTEQ S-160
Saw blade projection (mm)	95
Cutting length (mm)	3,200
Clamps	6 (optional up to 4 more)
Saw carriage speed (m/min)	up to 120
Program fence speed (m/min)	80**
Operating software	CADmatic 5
Operating system	Windows
Monitor	21,5" TFT flatscreen display
Main saw motor (kW)	15
Scoring saw motor (kW)	2,2
Main saw blade (mm)	380 x 4,4 x 60
Scoring saw blade (mm)	200 x 4,4 - 5,4 x 45
Average total air requirement (NI/min)	150
Dust extraction system (m ³ /h)	3,350 (26 m/sec)
Additional fan under second air table	✓ (optional)

* Values relate to the standard features

** Forwards 25 m/min

*** Dim. A: incl. 64 mm for extraction connection, dim. C: standard program fence width

MACHINE DIMENSIONS***			
SAWTEQ S-160	A (mm)	B (mm)	C (mm)
S-160/32/32	5,307	6,488	3,547



VALYOU

Our Mission, Your Performance.

LIFE CYCLE SERVICES

Improved performance, more efficient processes, faster help, assurance of availability and smarter working

TEAM & COVERAGE

Largest global service network in the industry with over 1,350 personnel.

INSTALLATION & COMMISSIONING

For a smooth start, we only let proven experts manage your setup.

OPERATION & CONTROL

After teaching your personnel the intuitive control system, our clever apps help to make the operator's life much easier.

MAINTENANCE & SERVICING

To keep things running, we're happy to take a preventative approach. You decide how often and how intensively you want the support to be. As we all know, prevention is better than the cure.

eSHOP & ONLINE ADVANTAGE

A few clicks and it's fixed. Receive exclusive advantages by ordering spare parts online, depending on market availability. shop.homag.com

HOTLINE & READINESS

When there's an emergency, we're here. Direct by phone, digitally via app or video, or with on-site support. We are close to you with over 90 regional service organizations worldwide. With more than 35,000 spare parts immediately available, we can deliver 85% of your orders fast.

TRAINING & EDUCATION

With classroom, live online or eLearning training, we offer flexible options to help you get knowledge. We conduct over 4,000 customer training courses every year, and we even have our own training centers in 19 countries

MODERNIZATION & IMPROVEMENT

Our modernization program is tailored to your machines and processes. We can evaluate your data and situation and advise you on the next step.

ANALYSIS & SUSTAINABILITY

On request, we analyze all your processes with proven tools and procedures (LeanSixSigma). We have a large, certified team of experts for this purpose.

FINANCING & CONSULTING

We offer you tailor-made financing concepts worldwide. With more than 60 years of experience and a close partner network of prominent banks and insurance companies to help us to find the right solution for you, we're always transparent and reliable in processing.



Fast support:
94% resolution rate
via our hotline

Close to you:
1,350 service experts worldwide

We get things moving:
Over 1,000 worldwide spare parts
shipments each day

No one else has that:
Electronic documentation on over
150,000 machines, available in 28
languages



HOMAG Group AG

info@homag.com
www.homag.com

YOUR SOLUTION